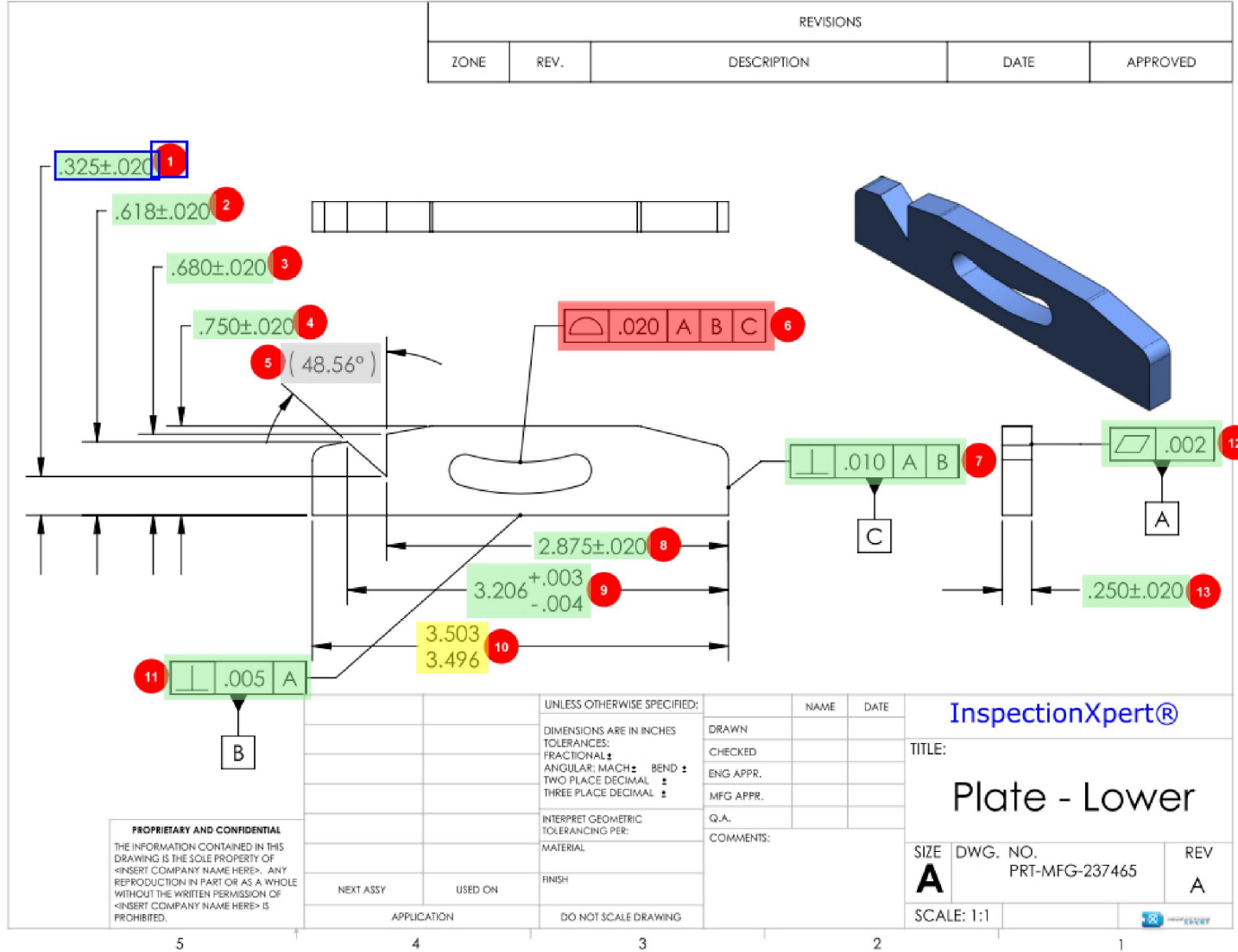


Dimensional Report

Customer: ABC Company	Units:	Job Number: 110516
Part Name: INS37465_MA16_11PT	Inspected by: AMCB	Cavity:
Part Number: 237465	Revision: A	Inspection Date: 16/05/2011



REVISIONS				
ZONE	REV.	DESCRIPTION	DATE	APPROVED

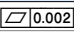
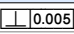
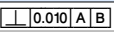
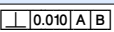
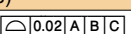
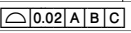
PROPRIETARY AND CONFIDENTIAL
THE INFORMATION CONTAINED IN THIS DRAWING IS THE SOLE PROPERTY OF <INSERT COMPANY NAME HERE>. ANY REPRODUCTION IN PART OR AS A WHOLE WITHOUT THE WRITTEN PERMISSION OF <INSERT COMPANY NAME HERE> IS PROHIBITED.

UNLESS OTHERWISE SPECIFIED:	NAME	DATE
DIMENSIONS ARE IN INCHES	DRAWN	
TOLERANCES:	CHECKED	
FRACTIONAL: ±	ENG APPR.	
ANGULAR: MACH ± BEND ±	MFG APPR.	
TWO PLACE DECIMAL ±	Q.A.	
THREE PLACE DECIMAL ±	COMMENTS:	
INTERPRET GEOMETRIC TOLERANCING PER:		
MATERIAL:		
FINISH:		
APPLICATION		
DO NOT SCALE DRAWING		

InspectionXpert®		
TITLE:		
Plate - Lower		
SIZE	DWG. NO.	REV
A	PRT-MFG-237465	A
SCALE: 1:1		

Signature	Title	Date
<i>Your Signature</i>	QA Technician	28/01/2013

Dimensional Report

Axis	Nominal	+ Tol	- Tol	S: 001	S: 002	S: 003				Max Dev	Range	OK	Reject
Customer: ABC Company				Units:			Job Number: 110516						
Part Name: INS37465_MA16_11PT				Inspected by:AMCB			Cavity:						
Part Number: 237465				Revision: A			Inspection Date: 16/05/2011						
[ITEM 9,X][ITEM 2,Y]													
DIM LOC6= LOCATION OF POINT IT2													
X	-3.2060	0.0040	0.0030	-3.2071	-3.2083	-3.2071				-0.0023	0.0012	3	
Y	0.6180	0.0200	0.0200	0.6176	0.6162	0.6154				-0.0026	0.0022	3	
[ITEM 12,,,Flat 0.002]													
DIM FLAT1= FLATNESS OF PLANE PLN_A													
M	 0.002			0.0014	0.0017	0.0014				0.0017	0.0003	3	
[ITEM 11,,,Perp 0.005]A]													
DIM PERP1= PERPENDICULARITY OF PLANE PLN_B,RFS TO WORKPLANE ZPLUS													
M	 0.005 A			0.0024	0.0032	0.0028				0.0032	0.0008	3	
[ITEM 7,,,Perp 0.010]A B]													
DIM PERP2= PERPENDICULARITY OF PLANE PLN_C,RFS TO WORKPLANE ZPLUS													
M	 0.010 A B			0.0054	0.0047	0.0062				0.0062	0.0015	3	
DIM PERP3= PERPENDICULARITY OF PLANE PLN_C,RFS TO PLANE PLN_B,RFS													
M	 0.010 A B			0.0067	0.0051	0.0058				0.0067	0.0016	3	
[ITEM 10]													
DIM LOC4= LOCATION OF POINT IT10A													
X	-3.5000	0.0040	0.0030	-3.5023	-3.5026	-3.5024				-0.0026	0.0003	3	
DIM LOC5= LOCATION OF POINT IT10B													
X	-3.5000	0.0040	0.0030	-3.5016	-3.5018	-3.5027				-0.0027	0.0011	3	
[ITEM 1]													
DIM LOC7= LOCATION OF POINT IT1													
Y	0.3250	0.0200	0.0200	0.3283	0.3272	0.3283				0.0033	0.0011	3	
[ITEM 3]													
DIM LOC8= LOCATION OF POINT IT3													
Y	0.6800	0.0200	0.0200	0.6797	0.6784	0.6847				0.0047	0.0063	3	
[ITEM 4]													
DIM LOC14= LOCATION OF POINT IT4A													
Y	0.7500	0.0200	0.0200	0.7592	0.7573	0.7568				0.0092	0.0024	3	
DIM LOC15= LOCATION OF POINT IT4B													
Y	0.7500	0.0200	0.0200	0.7599	0.7587	0.7551				0.0099	0.0048	3	
[ITEM 6,T,,,profile 0.02]A B C]													
Total Profile (Worst Case)													
T	 0.02 A B C			0.0089	0.0108	0.0108							
				Total Profile	0.0178	0.0216	0.0216						
DIM LOC9= LOCATION OF POINT IT6_1													
X	-1.3560	0.0100	0.0100	-1.3551	-1.3544	-1.3548				0.0016	0.0007	3	
Y	0.4961	0.0100	0.0100	0.4973	0.4982	0.4974				0.0021	0.0009	3	
Z	0.1200	0.0100	0.0100	0.1224	0.1258	0.1246				0.0058	0.0034	3	
T	 0.02 A B C			0.0028	0.0064	0.0049				0.0064	0.0036	3	
				Total Profile	0.0056	0.0128	0.0098						
DIM LOC12= LOCATION OF POINT IT6_2													
X	-1.7612	0.0100	0.0100	-1.7601	-1.7682	-1.7643				-0.0070	0.0081	3	

The results relate only to the items inspected.

This report shall not be reproduced except in full.

Dimensional Report

Customer: ABC Company				Units:			Job Number: 110516						
Part Name: INS37465_MA16_11PT				Inspected by:AMCB			Cavity:						
Part Number: 237465				Revision: A			Inspection Date: 16/05/2011						
Axis	Nominal	+ Tol	- Tol	S: 001	S: 002	S: 003				Max Dev	Range	OK	Reject
Y	0.4454	0.0100	0.0100	0.4462	0.4513	0.4487				0.0059	0.0051	3	
Z	0.1200	0.0100	0.0100	0.1231	0.1258	0.1236				0.0058	0.0027	3	
T	⊖ 0.02 A B C			0.0034	0.0108	0.0058				0.0108	0.0074	2	1
Total Profile				0.0068	0.0216	0.0116							
DIM LOC13= LOCATION OF POINT IT6_3													
X	-2.1434	0.0100	0.0100	-2.1406	-2.1415	-2.1426				0.0028	0.0020	3	
Y	0.4959	0.0100	0.0100	0.4974	0.4982	0.4972				0.0023	0.0010	3	
Z	0.1200	0.0100	0.0100	0.1283	0.1267	0.1248				0.0083	0.0035	3	
T	⊖ 0.02 A B C			0.0089	0.0073	0.0050				0.0089	0.0039	3	
Total Profile				0.0178	0.0146	0.0100							
DIM LOC16= LOCATION OF POINT IT6_4													
X	-2.2331	0.0100	0.0100	-2.2321	-2.2314	-2.2324				0.0017	0.0010	3	
Y	0.5095	0.0100	0.0100	0.5136	0.5128	0.5126				0.0041	0.0010	3	
Z	0.1200	0.0100	0.0100	0.1232	0.1246	0.1242				0.0046	0.0014	3	
T	⊖ 0.02 A B C			0.0053	0.0059	0.0053				0.0059	0.0006	3	
Total Profile				0.0106	0.0118	0.0106							
DIM LOC17= LOCATION OF POINT IT6_5													
X	-2.3374	0.0100	0.0100	-2.3359	-2.3342	-2.3349				0.0032	0.0017	3	
Y	0.4297	0.0100	0.0100	0.4317	0.4325	0.4321				0.0028	0.0008	3	
Z	0.1200	0.0100	0.0100	0.1223	0.1236	0.1227				0.0036	0.0013	3	
T	⊖ 0.02 A B C			0.0034	0.0056	0.0044				0.0056	0.0022	3	
Total Profile				0.0068	0.0112	0.0088							
DIM LOC18= LOCATION OF POINT IT6_6													
X	-2.3100	0.0100	0.0100	-2.3083	-2.3072	-2.3068				0.0032	0.0015	3	
Y	0.2849	0.0100	0.0100	0.2856	0.2871	0.2876				0.0027	0.0020	3	
Z	0.1200	0.0100	0.0100	0.1218	0.1223	0.1218				0.0023	0.0005	3	
T	⊖ 0.02 A B C			0.0026	0.0042	0.0046				0.0046	0.0020	3	
Total Profile				0.0052	0.0084	0.0092							
DIM LOC19= LOCATION OF POINT IT6_7													
X	-2.2041	0.0100	0.0100	-2.2021	-2.2052	-2.2058				0.0020	0.0037	3	
Y	0.2372	0.0100	0.0100	0.2384	0.2387	0.2373				0.0015	0.0014	3	
Z	0.1200	0.0100	0.0100	0.1228	0.1214	0.1221				0.0028	0.0014	3	
T	⊖ 0.02 A B C			0.0036	0.0023	0.0027				0.0036	0.0013	3	
Total Profile				0.0072	0.0046	0.0054							
DIM LOC20= LOCATION OF POINT IT6_8													
X	-1.8721	0.0100	0.0100	-1.8706	-1.8718	-1.8714				0.0015	0.0012	3	
Y	0.1838	0.0100	0.0100	0.1852	0.1868	0.1862				0.0030	0.0016	3	
Z	0.1200	0.0100	0.0100	0.1224	0.1212	0.1226				0.0026	0.0014	3	
T	⊖ 0.02 A B C			0.0032	0.0032	0.0036				0.0036	0.0004	3	
Total Profile				0.0064	0.0064	0.0072							
DIM LOC21= LOCATION OF POINT IT6_9													
X	-1.3092	0.0100	0.0100	-1.3046	-1.3035	-1.3039				0.0057	0.0011	3	
Y	0.2339	0.0100	0.0100	0.2352	0.2368	0.2362				0.0029	0.0016	3	
Z	0.1200	0.0100	0.0100	0.1222	0.1234	0.1231				0.0034	0.0012	3	
T	⊖ 0.02 A B C			0.0053	0.0072	0.0066				0.0072	0.0019	3	
Total Profile				0.0106	0.0144	0.0132							
DIM LOC22= LOCATION OF POINT IT6_10													
X	-1.1858	0.0100	0.0100	-1.1846	-1.1834	-1.1838				0.0024	0.0012	3	

The results relate only to the items inspected.

This report shall not be reproduced except in full.

Customer: ABC Company				Units:			Job Number: 110516							
Part Name: INS37465_MA16_11PT				Inspected by: AMCB			Cavity:							
Part Number: 237465				Revision: A			Inspection Date: 16/05/2011							
Axis	Nominal	+ Tol	- Tol	S: 001	S: 002	S: 003				Max Dev	Range	OK	Reject	
Y	0.2894	0.0100	0.0100	0.2916	0.2913	0.2916				0.0022	0.0003	3		
Z	0.1200	0.0100	0.0100	0.1237	0.1239	0.1226				0.0039	0.0013	3		
T	⊖ 0.02 A B C			0.0045	0.0050	0.0040				0.0050	0.0010	3		
Total Profile				0.0090	0.0100	0.0080								
DIM LOC23= LOCATION OF POINT IT6_11														
X	-1.1524	0.0100	0.0100	-1.1572	-1.1568	-1.1553				-0.0048	0.0019	3		
Y	0.3869	0.0100	0.0100	0.3891	0.3882	0.3886				0.0022	0.0009	3		
Z	0.1200	0.0100	0.0100	0.1267	0.1241	0.1237				0.0067	0.0030	3		
T	⊖ 0.02 A B C			0.0088	0.0062	0.0050				0.0088	0.0038	3		
Total Profile				0.0176	0.0124	0.0100								
DIM LOC24= LOCATION OF POINT IT6_12														
X	-1.2574	0.0100	0.0100	-1.2591	-1.2582	-1.2589				-0.0017	0.0009	3		
Y	0.5078	0.0100	0.0100	0.5102	0.5083	0.5087				0.0024	0.0019	3		
Z	0.1200	0.0100	0.0100	0.1247	0.1212	0.1225				0.0047	0.0035	3		
T	⊖ 0.02 A B C			0.0055	0.0015	0.0031				0.0055	0.0040	3		
Total Profile				0.0110	0.0030	0.0062								
DIM PROF13= PROFILE OF SURFACE OF SET SET1 FORMANDLOCATION														
M	⊖ 0.02 A B C			0.0089	0.0108	0.0108				0.0108	0.0019	1	2	
Total Profile				0.0178	0.0216	0.0216								
[ITEM 19,DF][ITEM 20,TP,,TP d 0.020m A B C]														
DIM LOC25= TRUE POSITION OF CIRCLE DIA18_1														
X	-0.6250			-0.6274	-0.6221	-0.6231								
Y	0.1875			0.1877	0.1887	0.1883								
DF	0.1250	0.0050	0.0050	0.1251	0.1268	0.1269				0.0019	0.0018	3		
TP	⊕ ∅0.020 A B C			0.0142	0.0126	0.0124				0.0142	0.0018	3		
Bonus				0.0049	0.0032	0.0031								
DIM LOC26= TRUE POSITION OF CIRCLE DIA18_2														
X	-1.0000			-1.0014	-1.0024	-1.0018								
Y	0.1250			0.1272	0.1262	0.1264								
DF	0.1250	0.0050	0.0050	0.1262	0.1278	0.1275				0.0028	0.0016	3		
TP	⊕ ∅0.020 A B C			0.0127	0.0118	0.0128				0.0128	0.0010	3		
Bonus				0.0038	0.0022	0.0026								
DIM LOC27= TRUE POSITION OF CIRCLE DIA18_3														
X	-2.8750			-2.8737	-2.8762	-2.8763								
Y	0.1875			0.1894	0.1889	0.1886								
DF	0.1250	0.0050	0.0050	0.1258	0.1264	0.1269				0.0019	0.0011	3		
TP	⊕ ∅0.020 A B C			0.0214	0.0158	0.0158				0.0214	0.0056	3		
Bonus				0.0042	0.0036	0.0031								
[ITEM 14,DF][ITEM 15,TP,,TP d 0.020 A B C]														
DIM LOC28= TRUE POSITION OF CIRCLE DIA14_1														
X	-3.2500			-3.2516	-3.2512	-3.2522								
Y	0.2812			0.2824	0.2826	0.2836								
DF	0.2810	0.0050	0.0050	0.2813	0.2819	0.2827				0.0017	0.0014	3		
TP	⊕ ∅0.020 A B C			0.0127	0.0137	0.0136				0.0137	0.0010	3		
Bonus				0.0000	0.0000	0.0000								
DIM LOC29= TRUE POSITION OF CIRCLE DIA14_2														
X	-0.2500			-0.2527	-0.2519	-0.2523								
Y	0.2812			0.2836	0.2824	0.2826								

The results relate only to the items inspected.

This report shall not be reproduced except in full.

Dimensional Report

Customer: ABC Company				Units:			Job Number: 110516						
Part Name: INS37465_MA16_11PT				Inspected by: AMCB			Cavity:						
Part Number: 237465				Revision: A			Inspection Date: 16/05/2011						
Axis	Nominal	+ Tol	- Tol	S: 001	S: 002	S: 003				Max Dev	Range	OK	Reject
DF	0.2810	0.0050	0.0050	0.2827	0.2823	0.2836				0.0026	0.0013	3	
TP	$\varnothing 0.020$ A B C			0.0114	0.0126	0.0141				0.0141	0.0027	3	
			Bonus	0.0000	0.0000	0.0000							
[ITEM 16,DF][ITEM 18,TP,,TP d 0.020m A B C]													
DIM LOC30= TRUE POSITION OF CIRCLE DIA16_1													
X	-3.2500			-3.2523	-3.2521	-3.2528							
Y	0.2813			0.2825	0.2828	0.2825							
DF	0.4060	0.0050	0.0050	0.4078	0.4062	0.4068				0.0018	0.0016	3	
TP	$\varnothing 0.020$ A B C			0.0173	0.0148	0.0137				0.0173	0.0036	3	
			Bonus	0.0068	0.0048	0.0042							
DIM LOC31= TRUE POSITION OF CIRCLE DIA16_2													
X	-0.2500			-0.2484	-0.2473	-0.2483							
Y	0.2812			0.2837	0.2829	0.2836							
DF	0.4060	0.0050	0.0050	0.4063	0.4064	0.4069				0.0009	0.0006	3	
TP	$\varnothing 0.020$ A B C			0.0164	0.0137	0.0149				0.0164	0.0027	3	
			Bonus	0.0053	0.0046	0.0041							
[ITEM 17]													
DIM DIST1= 3D DISTANCE FROM POINT IT15A_1 TO PLANE PLN_2, NO_RADIUS													
M	0.1560	0.0050	0.0050	0.1563	0.1542	0.1544				-0.0018	0.0021	3	
DIM DIST2= 3D DISTANCE FROM POINT IT15A_2 TO PLANE PLN_2, NO_RADIUS													
M	0.1560	0.0050	0.0050	0.1569	0.1538	0.1543				-0.0022	0.0031	3	
[ITEM 13,Z]													
DIM LOC32= LOCATION OF POINT IT13_1													
Z	0.2500	0.0200	0.0200	0.2584	0.2536	0.2528				0.0084	0.0056	3	
DIM LOC33= LOCATION OF POINT IT13_2													
Z	0.2500	0.0200	0.0200	0.2572	0.2568	0.2552				0.0072	0.0020	3	
DIM LOC34= LOCATION OF POINT IT13_3													
Z	0.2500	0.0200	0.0200	0.2586	0.2545	0.2537				0.0086	0.0049	3	
DIM LOC35= LOCATION OF POINT IT13_4													
Z	0.2500	0.0200	0.0200	0.2573	0.2562	0.2548				0.0073	0.0025	3	
DIM LOC36= LOCATION OF POINT IT13_5													
Z	0.2500	0.0200	0.0200	0.2588	0.2577	0.2572				0.0088	0.0016	3	
DIM LOC37= LOCATION OF POINT IT13_6													
Z	0.2500	0.0200	0.0200	0.2579	0.2563	0.2569				0.0079	0.0016	3	
DIM LOC38= LOCATION OF POINT IT13_7													
Z	0.2500	0.0200	0.0200	0.2604	0.2583	0.2562				0.0104	0.0042	3	
DIM LOC39= LOCATION OF POINT IT13_8													
Z	0.2500	0.0200	0.0200	0.2597	0.2592	0.2571				0.0097	0.0026	3	

The results relate only to the items inspected.
This report shall not be reproduced except in full.